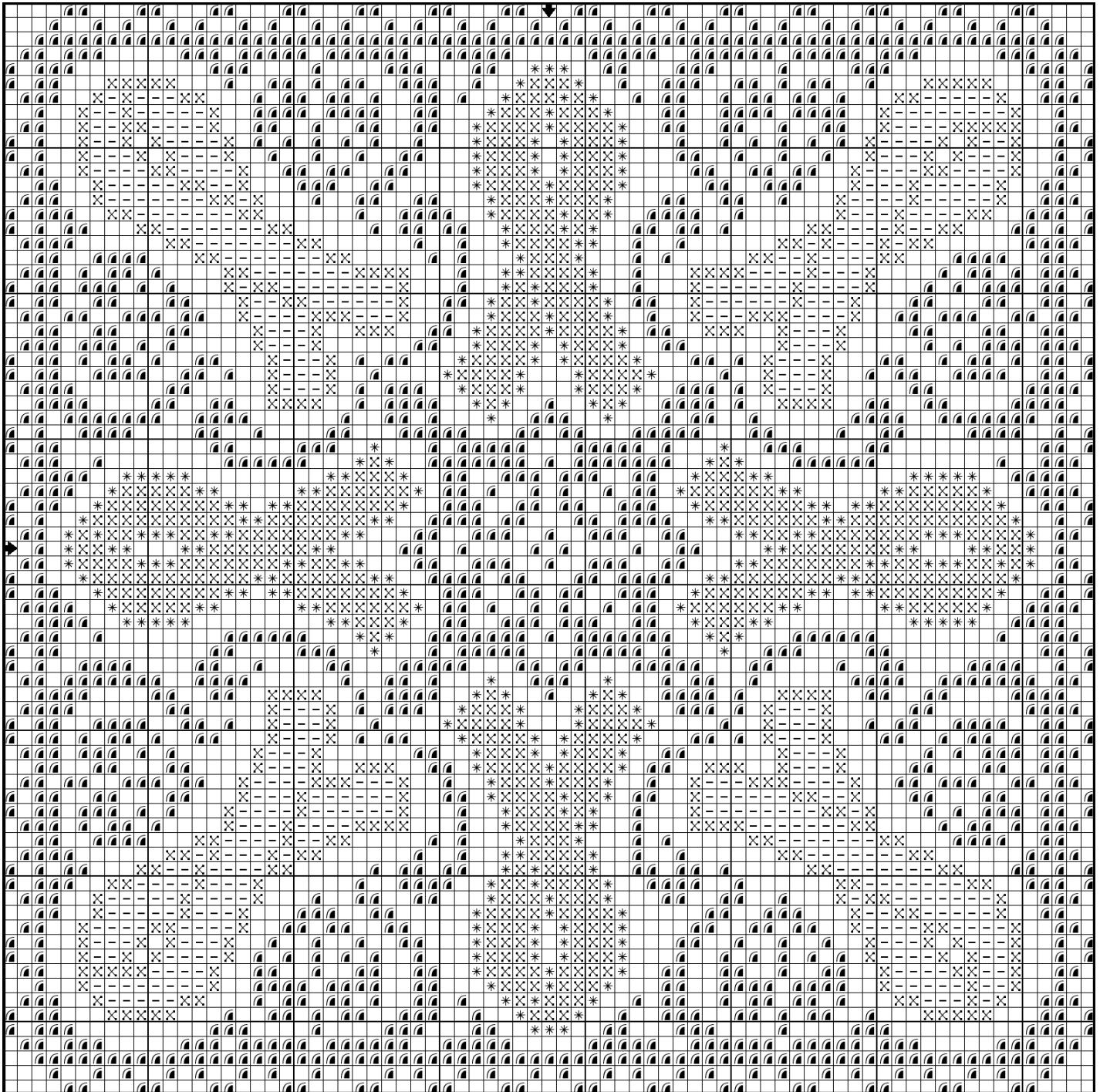


# Breast Cancer Awareness Ribbon Mandala

By  Ink Circles



**Stitch count:** 75w X 75h

**Fabric:** Use bone, tan, or light brown evenweave

**Size:** On 14 count fabric, the design will be 5 1/2" square. Cut fabric larger to allow for finishing.

**Floss:** Use 2 strands Carrie's Creation Threads  
([www.carriesthreads.com](http://www.carriesthreads.com))

## Symbol Carrie's Thread Color

✕	Sassy
*	Raspberry
☐	Purple Pansy
-	Strawberry Shake

See more patterns at [www.inkcircles.com](http://www.inkcircles.com)

Copyright 2006 — Distributed Free for personal use only.  
Not to be kitted, sold, or repackaged without permission.